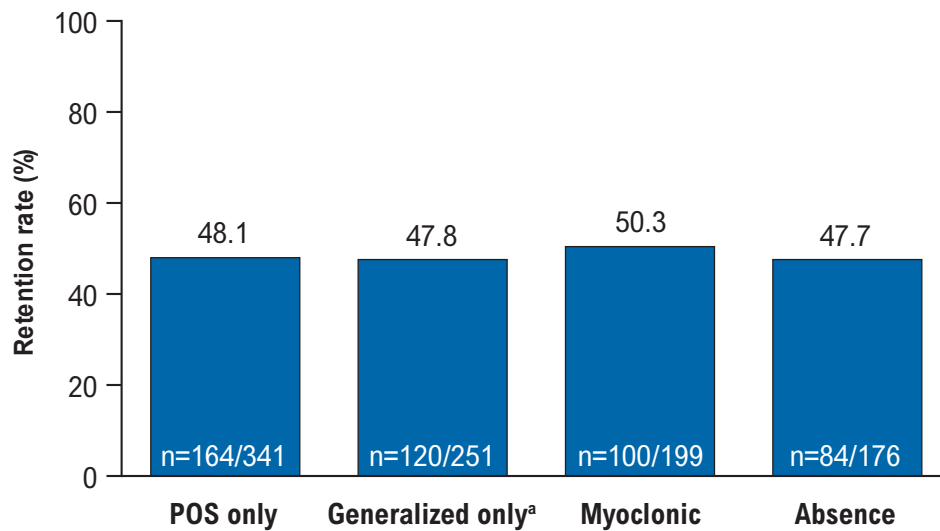


Figure 1. Retention rates at 24 months following initiation of perampanel treatment by baseline seizure type (Safety Analysis Set [N=1703])



Seizure types were assigned by the investigator without independent review or verification

Retention rate = number of patients on treatment for at least x months/number of patients who could have been on treatment for at least x months

^aIncludes generalized tonic-clonic seizures

POS, partial-onset seizures