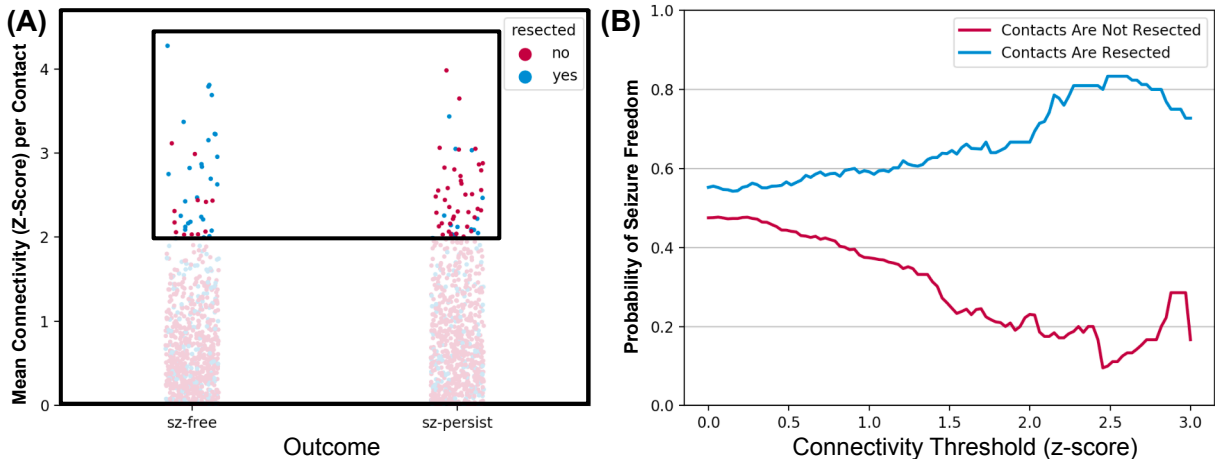


# Resection of Very High Outflow Contacts and Surgical Outcomes



**Figure 1.** Connectivity values and surgical outcomes based on whether or not given contacts were included in the resected area. **(A)** Categorical scatter plot showing the resection status and outcome of all contacts with a mean outflow connectivity. The black rectangle indicates those contacts classified as "very high outflow." **(B)** Positive predictive values (blue) and negative predictive values (red, shown as  $1 - \text{NPV}$  to match axes) of a seizure-free outcome based on the resection status of electrode contacts at increasing z-score thresholds.