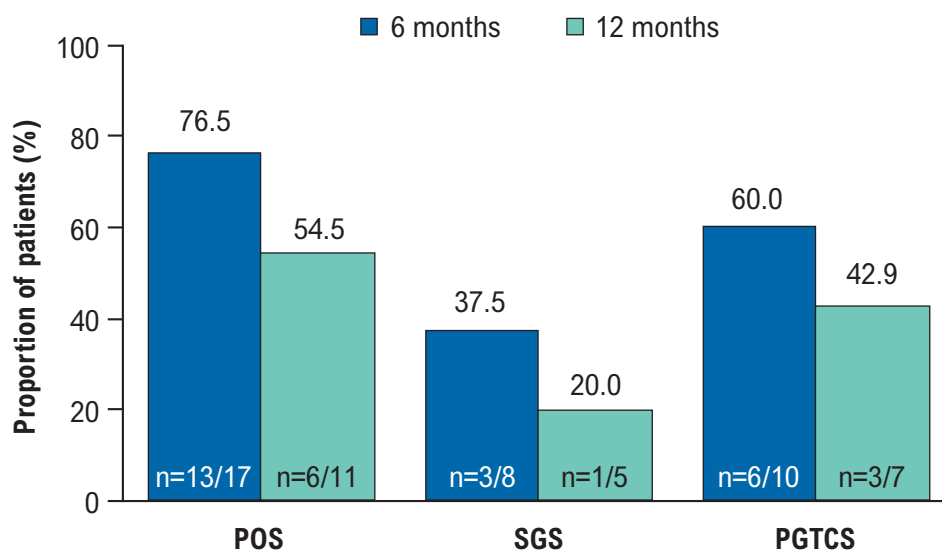


Figure 1. Proportion of pediatric patients who achieved seizure freedom from POS, SGS, or PGTCs during the Core Study Maintenance Period and then remained seizure free for 6 and/or 12 months during the Extension A Phase



PGTCs, primary generalized tonic-clonic seizures; POS, partial-onset seizures; SGS, secondarily generalized seizures