

Settings

Update visualisation

Semiologies

☐ Spasms - epileptic/infantile

☐ Spitting

☒ Tonic ☐ Left ☒ Right ☐ Other

☐ Tonic-Clonic

☐ Upper Limb Automatism

Remove custom semiology Add custom semiology

Scores

	A	B
1	Structure	Score
2	Left-SMC-supplementary-motor-cortex	367
3	Right-SMC-supplementary-motor-cortex	325
4	Left-FRP-frontal-pole	283
5	Left-MFG-middle-frontal-gyrus	261
6	Right-FRP-frontal-pole	249

Data Probe

Yellow (L 7.0, A 3.5, S 45.9) Sagittal Sp: 1.0

L None

F Scores (89, 136, 124) 367

B MNI_152_mri (89, 136, 124) 75.443176

S MNI_152_gif_cerebrum: ● Left-SMC-supplementary-motor-cortex

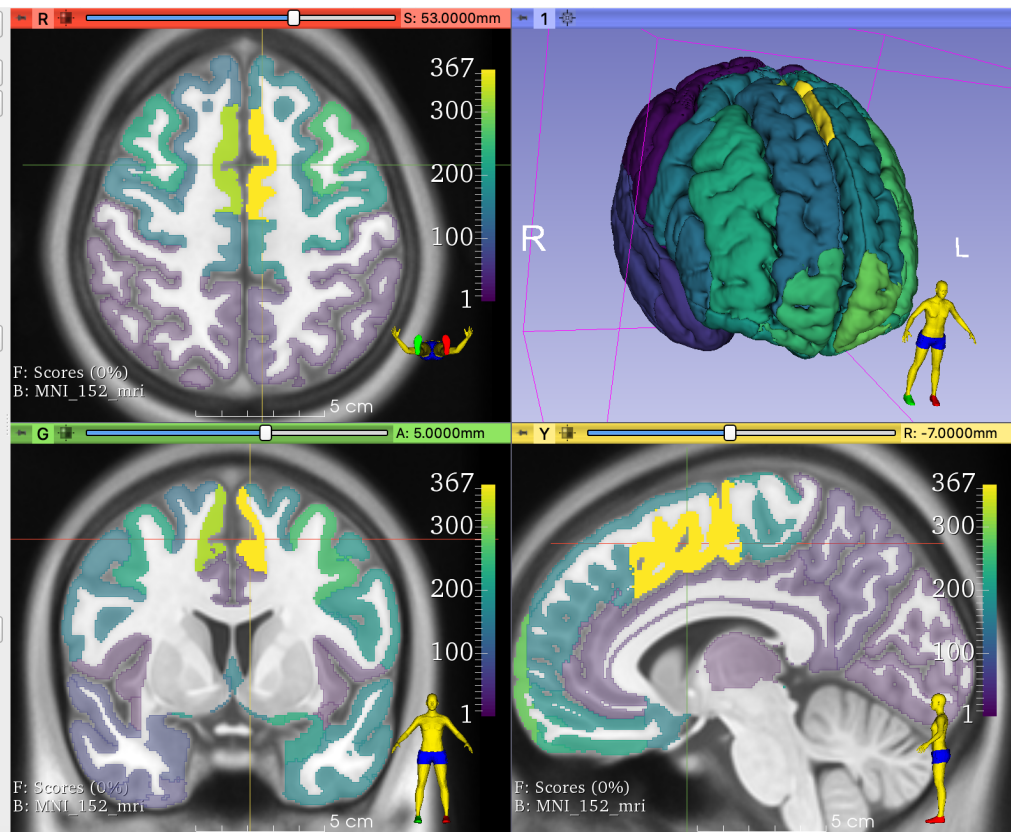


Fig. 1. Result of querying the database with the semiology term 'Tonic right'. Top left: user-specified query. Middle left: table showing each brain region and the corresponding number of data points. Right: anatomical map showing the most likely regions associated with the semiology term. The colour bar shows the number of data points, where brighter colours indicate a higher number of data points. The left superior frontal gyrus (supplementary motor area) is the region identified as being most commonly involved. Note that the right side of the screen corresponds to the left hemisphere in the axial and coronal views.