

Figures:

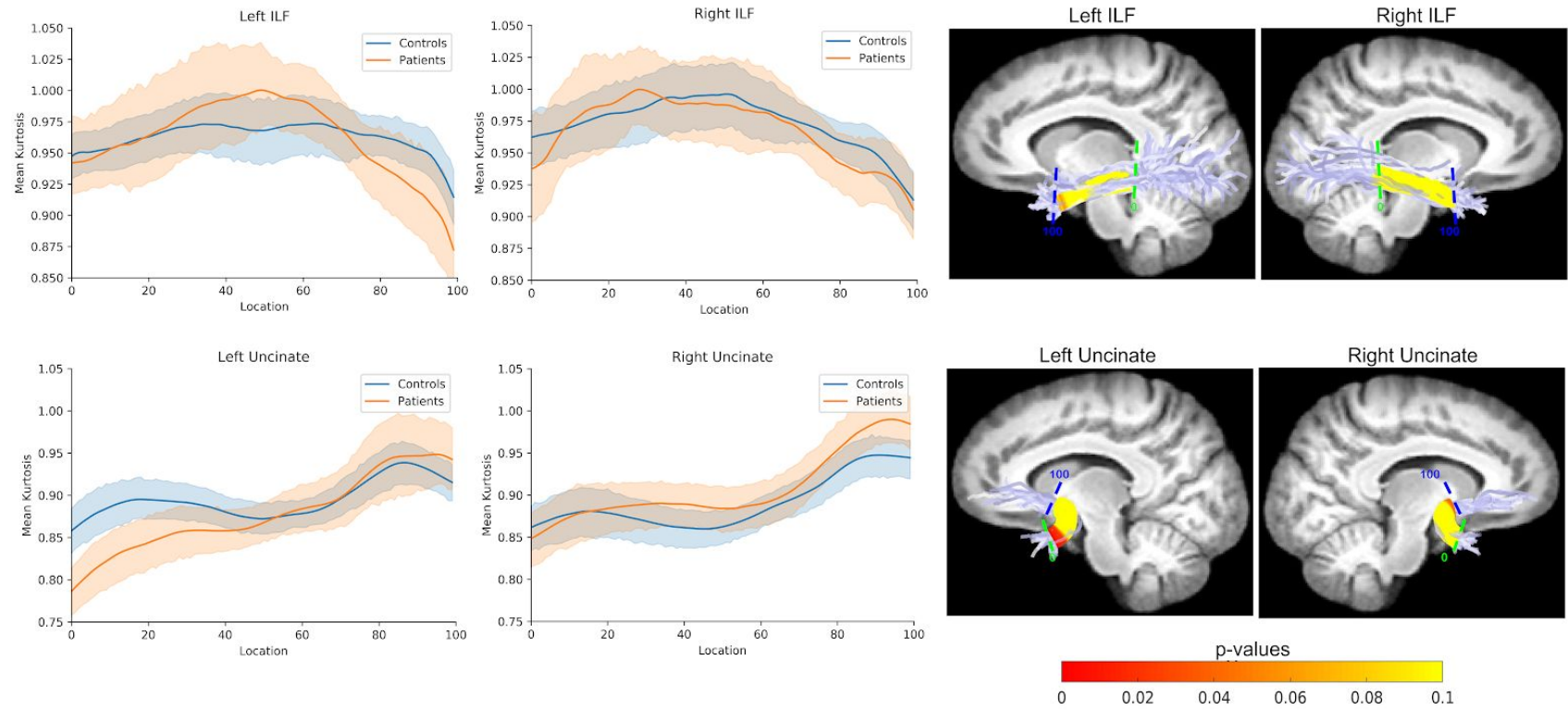


Figure 1. Controls (red) vs patients (blue) mean kurtosis profiles sampled at equidistant points (0-100) along the inferior longitudinal fasciculus (top row) and uncinate fasciculus (bottom row). The p-values showing group base statistical difference at each point are rendered along each fiber bundle length.

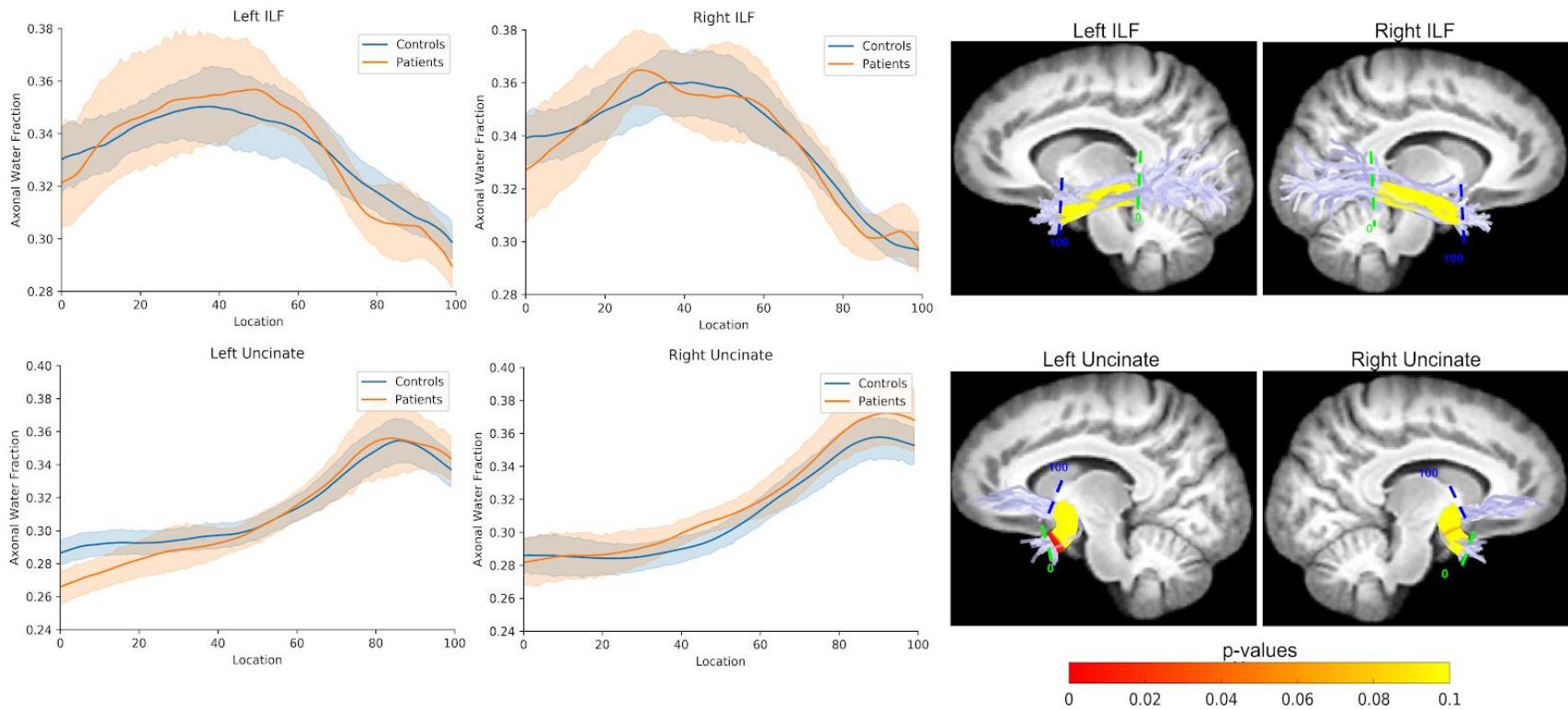


Figure 2. Controls (red) vs patients (blue) axonal water fraction profiles sampled at equidistant points (0-100) along the inferior longitudinal fasciculus (top row) and uncinate fasciculus (bottom row). The p-values showing group base statistical difference at each point are rendered along each fiber bundle length.