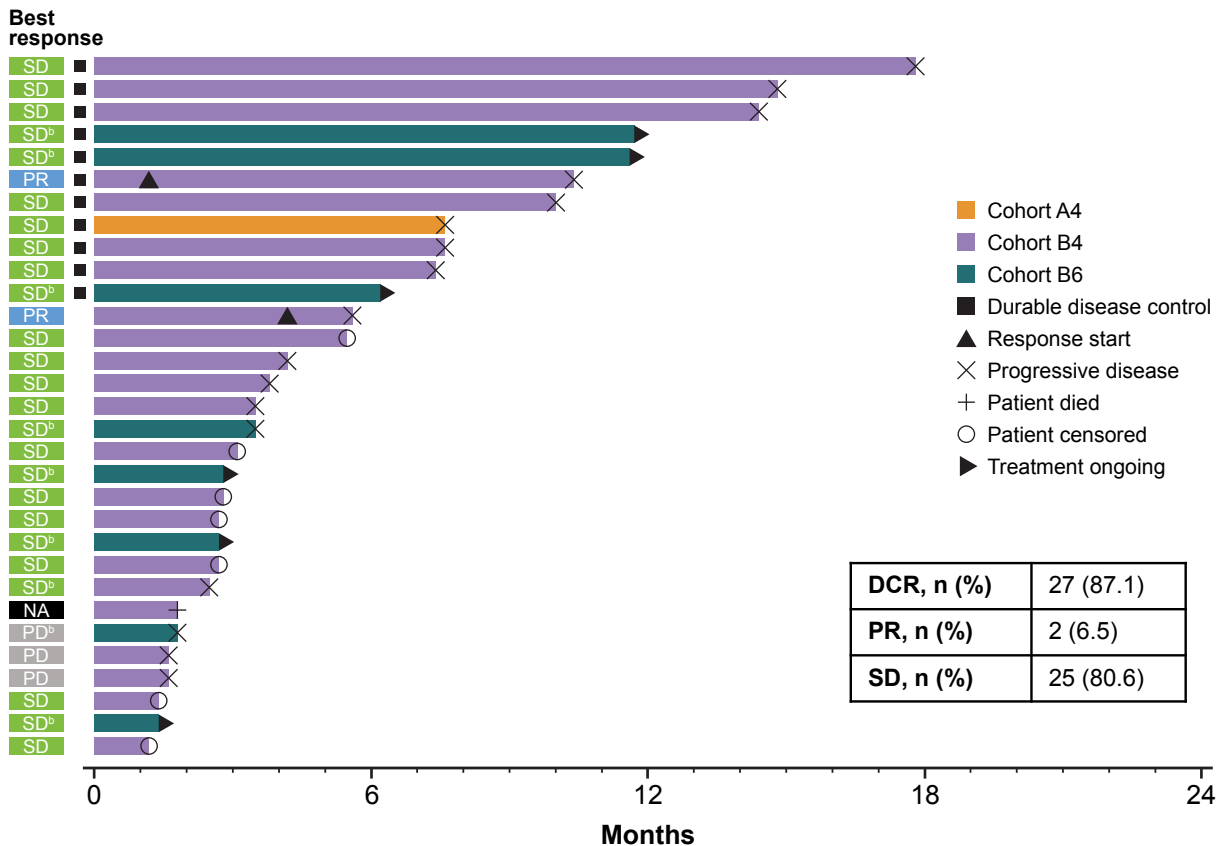


Figure 2. Time on treatment and response (n=31)^a



Durable disease control is SD, PR, or CR for >6 mo. Data cut: 26 May 2022.

CR, complete response; CS, chondrosarcoma; DCR, disease control rate (best response of SD, PR, and CR); NA, no postbaseline scan available; PD, progressive disease; PR, partial response; SD, stable disease.

^a Four patients were excluded from analysis for taking prohibited medications (n=1; cohort B6), not having conventional CS (n=1; cohort B6), or not having first scan data (n=2; cohort B4). ^b Patient has a mutation in *IDH1* (R132) or *IDH2* (R172).