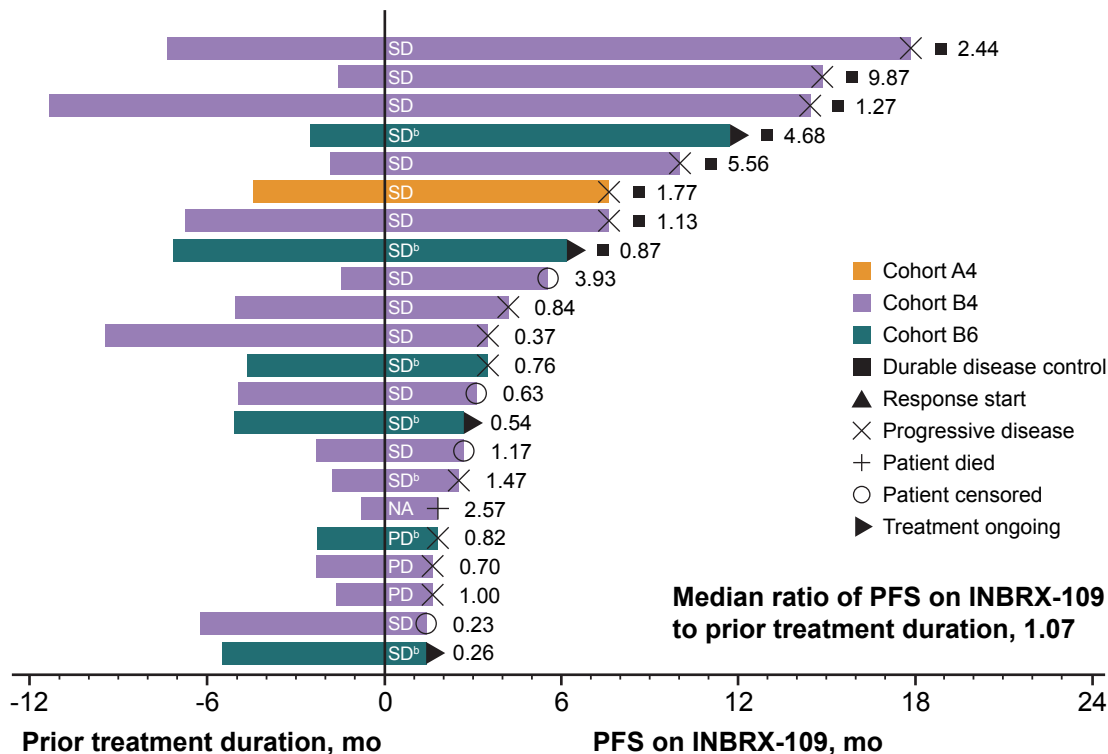


Figure 3. Ratio of PFS with INBRX-109 to prior treatment duration (n=22)^a



Best response on treatment with INBRX-109 is indicated within each bar, and the ratio of PFS on INBRX-109 to prior treatment duration is indicated to the right of each bar. Durable disease control is SD, PR, or CR for >6 mo. Data cut: 26 May 2022.

CR, complete response; CS, chondrosarcoma; NA, no postbaseline scan available; PD, progressive disease; PFS, progression-free survival; PR, partial response; SD, stable disease.

^aPatients were excluded from analysis for taking prohibited medications (n=1; cohort B6), not having conventional CS (n=1; cohort B6), a long prior treatment duration of 84 mo (n=1; cohort B6), or no prior treatment durations or whose treatment duration could not be estimated (n=10). Partial start and stop dates were estimated using 01 for missing days and January for missing months. ^b Patient has a mutation in *IDH1* (R132) or *IDH2* (R172).