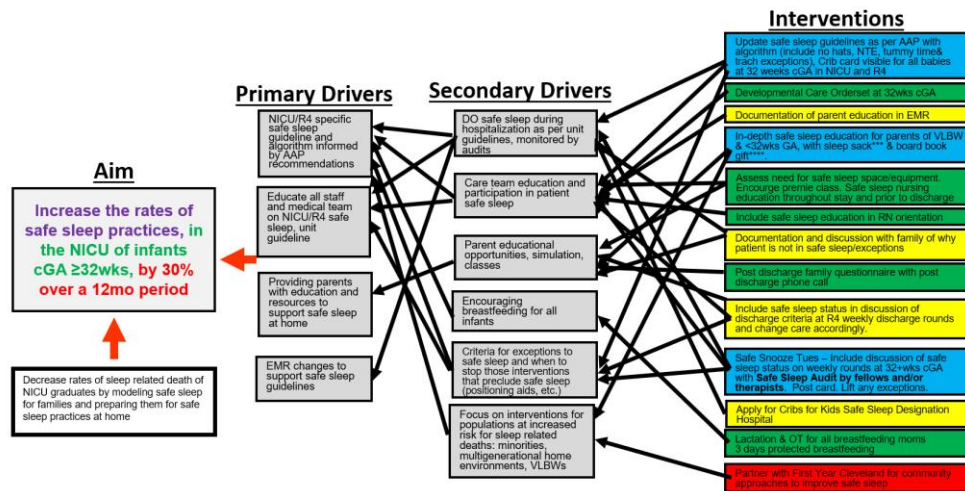


Key: Green: routinely done in unit. Blue: new additions. Yellow: in process. Red: future direction.

Key Driver Diagram



KDD adapted and modified from Salada et al. & NICHQ Successful Strategies Hospital Can Use to Support Safe Sleep
 ***Swaddle for Safe Sleep class funded by UH Rainbow Babies & Children's Foundation
 ****Board Book (Sleep Baby Safe and Snug) supported by Charlie's Kids Foundation

Last updated 9/13/24