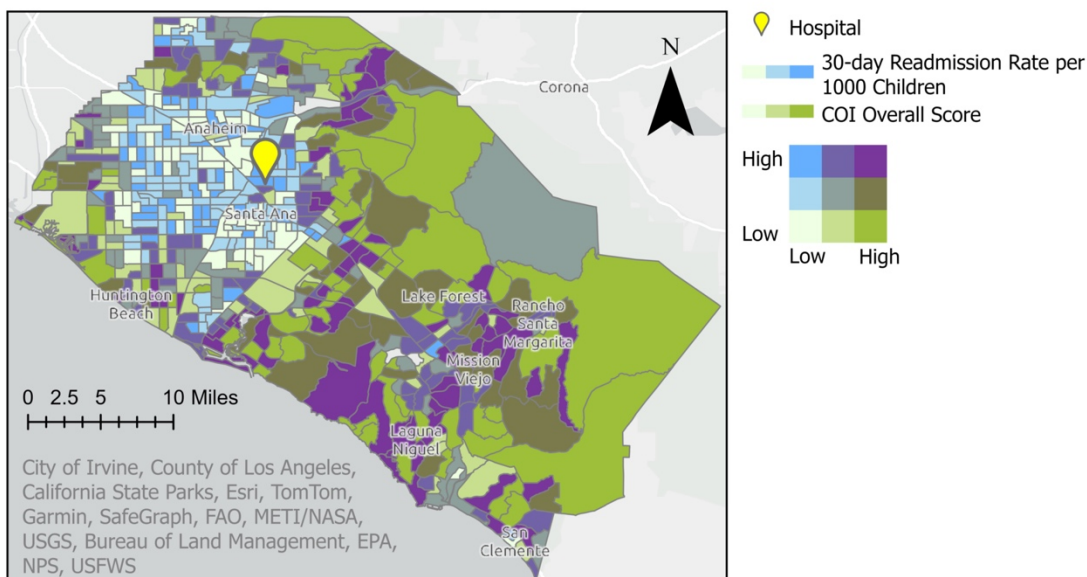
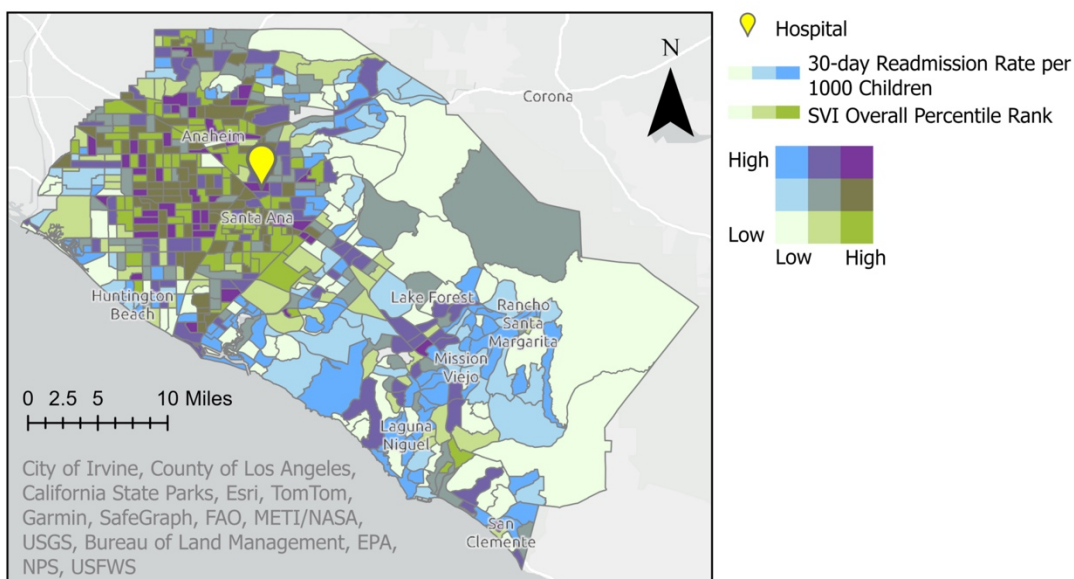


Figure 1. Overlap of Readmission Rate and Composite Indices.



A. 30-day Readmission Rate (RR) compared to Childhood Opportunity Index (COI) Overall Score. Blue indicates a census tract with high RR and low COI. Green indicates low RR and high COI. Purple indicates both high RR and high COI. There is some overlap of areas of low opportunity and high readmissions (blue) but also areas of high opportunity and high readmissions (purple).



B. 30-day Readmission Rate (RR) compared to Social Vulnerability Index (SVI) Overall Percentile Rank. Blue indicates a census tract with high RR and low SVI. Green indicates low RR and high SVI. Purple indicates both high RR and high SVI. There is some overlap of areas of high vulnerability and high readmissions (purple) but also areas of low vulnerability and high readmissions (blue).