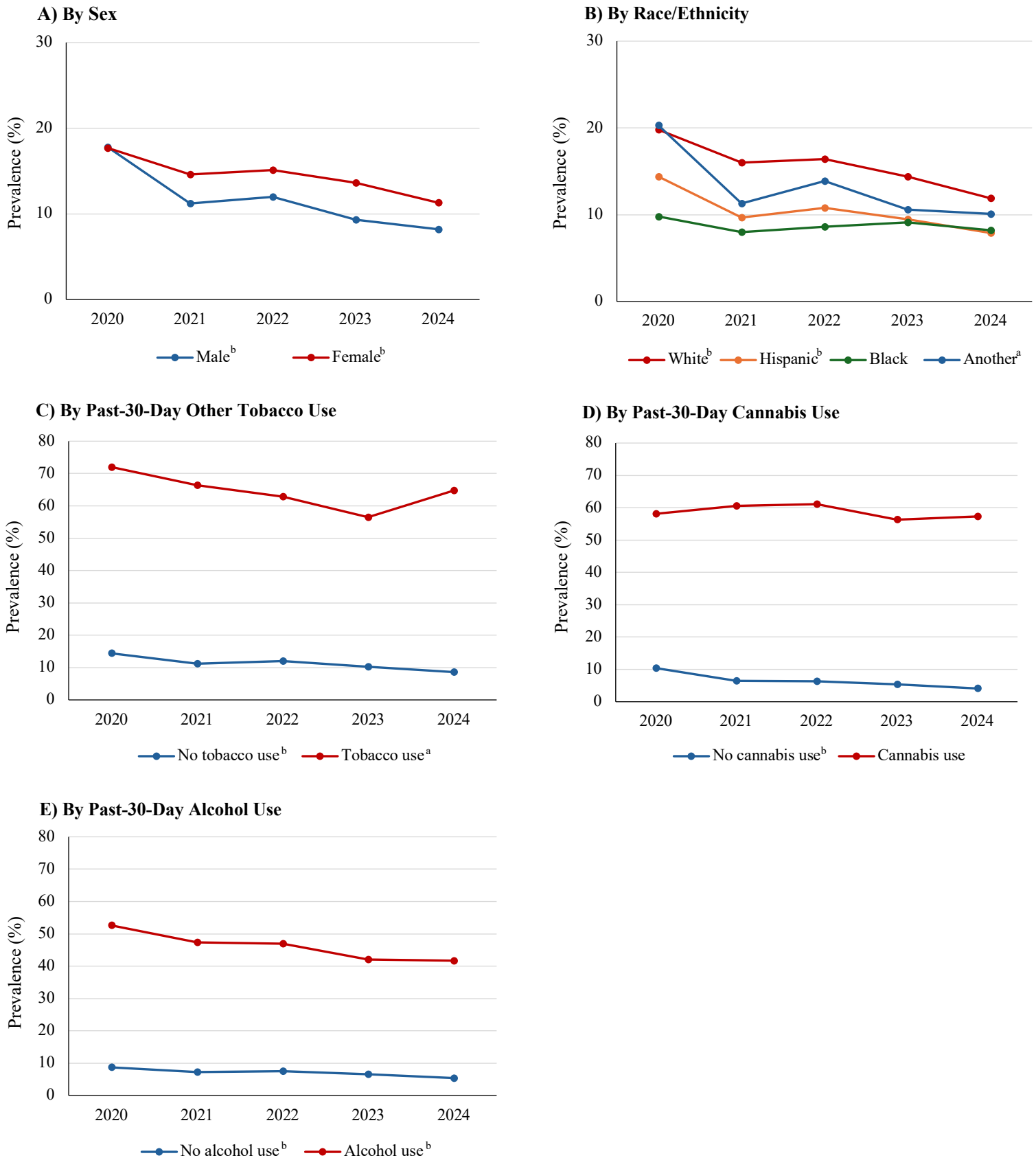


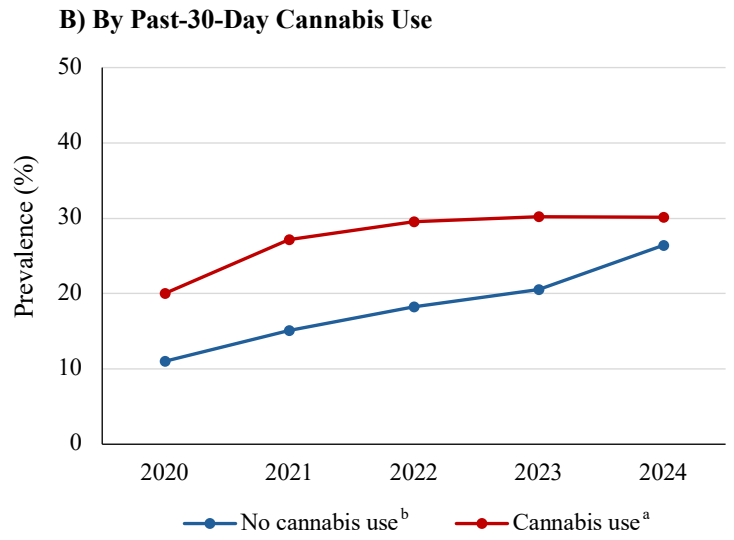
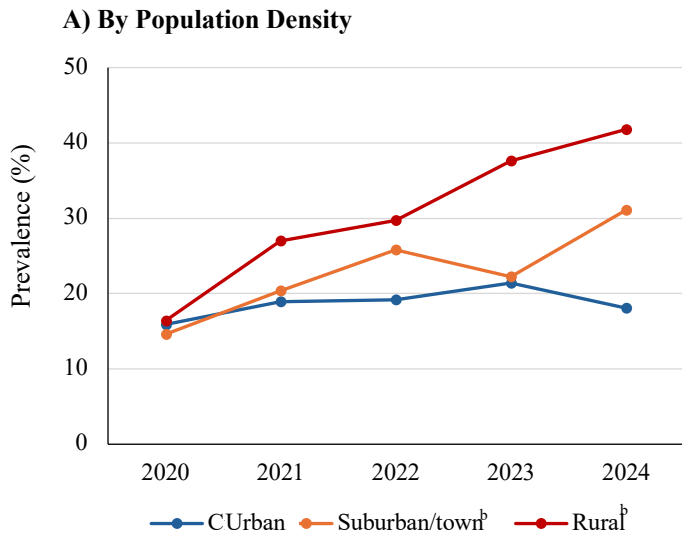
Figure 2. Trends in past-30-day vaping stratified by participant characteristics among all MTF respondents



^aSignificant linear and quadratic time trends ($p < .05$).

^bSignificant linear time trend ($p < .05$)

Trends in past-30-day daily vaping stratified by participant characteristics in past-30-day vapers



^aSignificant linear and quadratic time trends ($p < .05$).

^bSignificant linear time trend ($p < .05$)