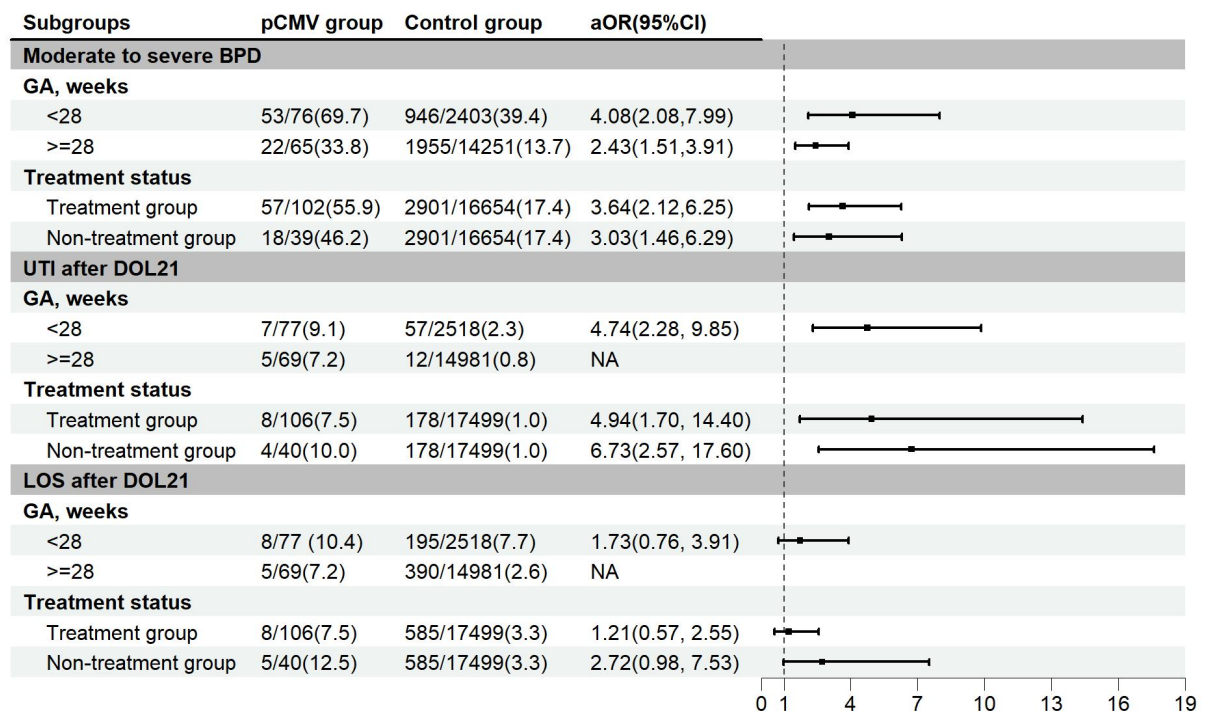


Fig1: Neonatal outcomes in the pCMV group and the control group by gestational age (<28⁰ weeks and ≥28⁰ weeks) and treatment status (treatment group and non-treatment group).



Abbreviations: aOR, adjusted odds ratio; BPD, bronchopulmonary dysplasia; LOS, late-onset sepsis; UTI, urinary tract infection; DOL, day of life.

Generalized estimating equation model adjusted for relevant confounders, including gestational age, small for gestational age, male sex, cesarean birth, use of antenatal steroids, maternal hypertension, maternal diabetes, Transport Risk Index of Physiologic Stability score, use of pulmonary surfactant ≥2 times within 21 days, type of respiratory support on DOL 21, maternal breastfeeding within 21 days, red blood cell suspension infusion within 21 days, IVH ≥ stage III, and patent ductus arteriosus requiring treatment.